



### Important Dates:

July 25-28. NWFCRC  
Agility Trial, Central  
Point Oregon. Contact:  
Joyce Brackney, (530)  
842-4839 or jbrack-  
ney@snowcrest.com

Thursday Aug. 15th,  
2013. Supported Entry.  
Rainier Sporting Dog  
Show. Enumclaw Expo  
Center, Enumclaw WA.  
Contact: Mary Aykens,  
(350) 895-6055 or  
mary333@aol.com

### Inside this issue:

President's Mes-	2-3
Gastric Dilatation and Volvulus	3-4
Our Dogs	5-7
Specialty Update	8-9
Spotlight on Obe- dience, continued	10-12
Agility Raffle	13
Fun Day Invitation	14
About Us/Contact	15

# FLAT -COAT TIMES

SUMMER 2013



## FCRSA Specialty 2014: Spotlight on Obedience

When the nation's flat-coats invade Albany, Oregon next June for the annual specialty, Obedience Competition will be fun and entertaining. Jeanne Allen, chair of the obedience and rally events, says judges Theresa Temple and Chris Cornell are very pleasant to show under and really enjoy what they are doing. Jeanne adds, "Of course with our Peter Pan dogs, they could be in for some good laughs, too." Theresa will judge rally on Mon. June 2nd and she and Chris will both judge obedience on Tues. June 3rd. Bios for the judges can be found on page 11 of this newsletter.

Regular obedience classes offered are:

Novice A&B, Open A&B, Utility A&B.

Non-regular classes offered:

Veterans (dogs or bitches 7 years or older) exercises are the same as the novice class.

Brace (for 2 dogs, one handler)

Team (4 dogs & 4 handlers).

Jeanne reports there are now new optional titling classes that we will be also offering:

Beginning Novice A&B, (this class is a sort of a combination of obedience and rally)

Graduate Novice, Graduate Open

Versatility (dog must be able to do all of the exercises from Novice through utility).

Rally classes are:

Novice A&B, Advanced A&B, Excellent A&B.

Jeanne explains: "For those not familiar with rally, there are signs that you, the handler must guide your dog through. In rally you are allowed to talk and use hand signals to guide your dog through out the exercises, as compared to obedience where you can only give commands at the beginning of each exercise."

Jeanne goes on to offer some good advice to anybody interested in trying obedience or rally: "I suggest finding a good obedience class to attend and one where they will do competitive training as opposed to a "good-manners class." Lots of instructors now offer rally and obedience classes. Just check around and

## *President's Message*



Jeanne's champion and best friend, "Jedi."

Welcome to summer . I hope the first part of the year has been good for you and your four-footed friends. Many of you are enjoying activities with their flat coats—where agility, obedience, hunt test and of course breed. I hope there are many brags in this issue.

The agility trail is scheduled for July 25th -28th. Joyce Brackney is the chair. If you have any questions about it , please contact her at [jbrackney@snowcrest.net](mailto:jbrackney@snowcrest.net) . We are seeking donations for the raffle in conjunction with the trial. We are really pushing for your donations this year as the proceeds will help to off set the costs for the specialty we are hosting next year. Please be generous and donate what you can. Mary Aykens is the chair for the raffle and items or money (she'll be happy to buy items for you to add to the raffle) can be sent to her. You can contact her at [maryd333@aol.com](mailto:maryd333@aol.com) .Thanks in advance for your donations. Every little bit will help.

If you are on Facebook, there is now a page for the 2014 Specialty. Just type in "FCRSA 2014 national specialty." Kathy Adams is keeping it up to date. The website should be up shortly.

Hard to believe that in less then a year we will be hosting the national specialty. If you would like to help with it, please contact any of the officers or Joyce Brackney. There are still jobs that need to be filled and of course many extra hands will make everyone's job much easier. For some of you this will be your first chance to attend a national specialty. This is a great way to see a lot of FCR's in one place and is something you don't want to miss.

A Fun Day is planned for August 3rd, hosted by Joe and Carolyn Bersch at their ranch in Washington. If you'd like more info, please contact them at [cjbersch@comcast.net](mailto:cjbersch@comcast.net) . More info is included in the newsletter. We are also planning on another one for late August or early September in Oregon. We'll get more information to members when we have a set date. We are hoping to have it at Tru Line kennels about 10 miles north of Albany.

Have a great summer. Hope there are many brags for Jo to add to the newsletter. Have fun with the fur kids. Enjoy taking them for hikes and of course swimming and many other fun stuff with them.

Jeanne Allen  
NWFCRC President

# *Health Matters: Gastric Dilatation and Volvulus (Bloat)*

## *by Chris Hewison, BVETMed MRCVS*

Note: Chris Hewison is a veterinarian in Yorkshire, England, and the owner of flat-coated retrievers. This article is reprinted with his permis-

Gastric dilatation and volvulus (GDV) or 'bloat' is not a disease specific to flat-coated retrievers but it is much discussed amongst flat-coat owners as it is more common in large breed dogs and it is a true veterinary emergency. If left untreated a dog with bloat can rapidly die through associated shock. For this reason it is very important that we all learn the signs to look out for so we might improve our dog's chances of surviving it should it occur.

*GDV is a condition affecting large, deep-chested breeds*

### **Anatomy of the Stomach**

The stomach is part of the long tubular pathway through which the dog's food passes. It is an expandable, muscle-lined sac containing glands in its walls that produce acid and digestive juices. Food enters the stomach from the oesophagus and exits through the duodenum to pass on to the small intestines.

### **What Causes Bloat?**

The exact chain of events that leads to a GDV occurring remains unclear. We do know that it becomes more likely by eating a small number of large meals and by eating rapidly. The stomach can dilate as a result of the dog literally swallowing air ('aerophagia'). The gas is not due to bacterial fermentation of the food.

### **What happens when a dog bloats?**

If the stomach twists it pinches the point where the esophagus enters, a bit like twisting the top of an inflated balloon. This means that air and food that is in the stomach becomes trapped and the dog can neither belch nor vomit up the contents. A pinch effect at the exit of the stomach also prevents air passing into the intestines. The onset of clinical signs is usually acute and is often reported to follow a large meal and/or a period of exercise.

*A bloated stomach does not always twist (gastric dilation)*  
*A twisted stomach does not always bloat (chronic volvulus)*



*Figure 1- The process of volvulus - a surgeon's view*

## ***Bloat, continued***

### **Signs to look out for**

Call your vet immediately if your dog is displaying the following signs: restlessness, non-productive retching, salivation, abdominal distension (particularly where a hollow, drum-like sound can be made with a tap of the finger), weakness and collapse.

### **Treatment**

If a twist has not occurred then a dog with bloat may occasionally be treated without surgery. Once the dog has been given treatment for shock the vet may x-ray the dog to confirm the diagnosis. It may be possible to pass a stomach tube with the dog conscious (under sedation) allowing air to escape through the tube. Most cases, however, require emergency surgery to decompress the stomach and correct the twist. Once corrected, the stomach may be permanently sutured to the side of the body to prevent a further twist (this is called a gastropexy)

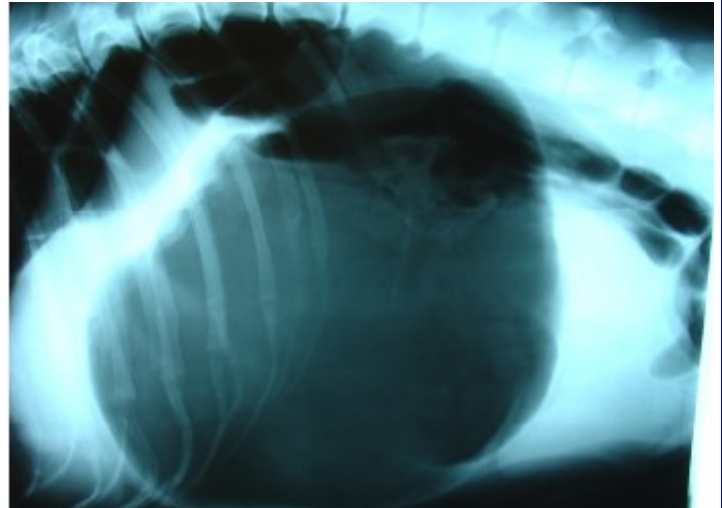
### **Dangers**

When the stomach dilates it squeezes the blood vessels in the stomach wall reducing their ability to supply blood to the muscular wall. The stomach is closely associated with the spleen, and a twist of the stomach may also interfere with the supply of blood to the spleen. Delays in treatment for bloat causes the stomach and spleen to be at great risk of necrosis and some dogs may need to have their spleen or a portion of the stomach to be removed. Once the circulation is re-established there is a further risk to the dog of shock, leading to concern over damage to other body organs, most especially the heart.

### **Prevention**

There have been lots of ideas about why a dog's stomach bloats. Studies have suggested that the incidence of the condition is higher in older dogs, in fast-eating dogs and in dogs fed from a raised food bowl. We always try to avoid walking or working our dogs just before or just after a meal. Bearing in mind that I am writing this article for owners of one breed in particular I am pleased to tell you that it has been reported that bloat is notably less common in happier dogs.

Keep those tails wagging!



*Figure 2- Lateral radiograph of a bloated dog's abdomen. The dark, air-filled stomach clearly filling the picture.*



## *Our Dogs*



Victoria Peterson writes:

On April 20th., 2013, we had 6 Flat Coats at agility class at Dog Star Agility in Rogue River, OR. The are from left to right:

Dax, Obi, & Twinkle (John Lovegrove & Vicki Peterson),

Reggie & Beezley (Lynda Spangler & Ray Kanopa),

&

Pebbles (Pat Boydston).



“Twinkle” Ch MACH Saudades’ First Star IC Tonite RA TD OF CA had a perfect weekend at the Eugene Kennel Club in Eugene, Oregon, over Memorial Day weekend. She qualified in both runs on Friday & earned QQQ both Saturday & Sunday, moving her closer to MACH 2.

\*\*\*\*\*



## Our Dogs



Lura Dunn and CH Shasta's Western Outlaw "Dalton" ran the Furry 5 K and won in Lura's division! He refrained from making potty stops and swimming in the wading pools at the water stop so that they could run fast! He was rewarded with a wading pool

swim at the end!



\*\*\*\*\*

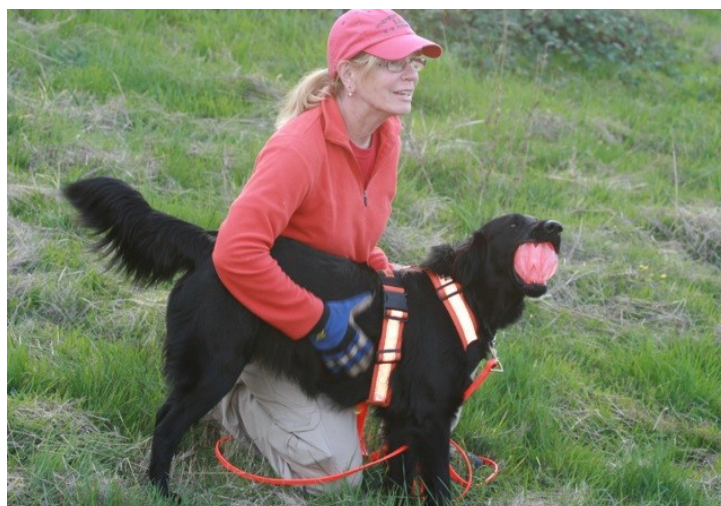
Maggie Minetti updates us on her agility-lovin' flat-coat:

Valleycrest Feudin' Fussin' and a Fightin' MX MXJ "Jasper" went to the lab club trial all 3 days this weekend. He double qualified all standard and jumpers runs. We tried Time to Beat but I didn't fully understand the rules before we ran so we didn't qualify that run. (So he got 6 of 7 runs for the weekend!) He also earned his master excellent and master excellent jumpers titles this weekend, and placed 4th in standard on Saturday and Sunday against a lot of border collies in his 20" jump height! I am very proud of my little man! I know he's going to wake me up at 4:45 and expect to go again; he loves his agility!

\*\*\*\*\*

\* Lynda Spangler's CH Shasta P. Beezley, age 2 1/2, finished her championship this March in the Albany, Oregon show with a five point major. Lynda reports she was handled in the ring by Lindsey Wendell who did a marvelous job getting Beez to do her very best. Beez has also earned her Open jumpers title and her novice standard titles in Agility.

Her proud owners were most thrilled that she earned her Wilderness Search Dog certification on May 12th. Lynda writes: "She is now able to search for lost persons with the Josephine County K-9 Search and Rescue team as a sent specific trailing dog. We started training for certification when she was 12 weeks old, practicing twice a week in wilderness and urban settings. In order to join the team I was required to successfully complete the Oregon Sheriff's Search and Rescue academy which consisted of land navigation, survival techniques, first aid, search techniques, communications etc... I had no background in any of these skills so it has been quite an exciting challenge. For her certification test Beezley had to find a person who had been missing for 5 hours at a distance of nearly a mile. She had to work through the scents of several other humans, through strong winds, and up and down steep terrain. The entire process, although difficult, has been extremely rewarding and fun. We are moving forward to older and longer trails with the hope that we can save lives."



The multi-talented team of Lynda Spangler and CH Shasta P Beezley NA OAJ, Wilderness Search Dog

\*\*\*\*\*



## *Our Dogs*



GCH CH Gondolin Misty Mountain River Canyon

From Kathy Adams:  
GCH CH Gondolin Misty Mountain River Canyon passed her very first hunt test on Mother's Day!! Fresh out of force fetch she is well on her way on the path to get her JH title:). Thank you Matt Nolan, our great trainer!!

Editor's note: Matt's words of advice to owner-handler Kathy Adams: don't screw up! And she didn't!

\*\*\*\*\*

GCH Shasta's Western Samurai "Ronin", owned by Lura Dunn and David Kerschner took a fourth place group win at Yakima on June 2nd.

\*\*\*\*\*



New Champion Rainshadow's Rollin' on the River "Flo", owned by Jo and Steve Chinn and handled by Jennifer Holmberg Baggenstos. She finished on Saturday at the Lynden Show.



First points! Rainshadow's Summer Breeze "Bree", owned by Chris and Claire Cornell, earned a three-point major at the Lynden Show on Sunday. She was handled by Rick Baggenstos. She went on to win the points at the Puyallup Show on Saturday.

## *FCRSA 2014 Specialty Update*

### Hotels for FCRSA 2014 Specialty in Albany, Oregon

Reservations open June 10, 2013.

The Host Hotels, Comfort Suites and Holiday Inn Ex-press are adjacent to the fairgrounds. The Best Western Plus Prairie Inn is a short distance away. All events (meals, meetings, conformation, obedience and grooming) will be held in the Willamette Event Center at the Linn County Fairgrounds. No events will be held at the hotel.

1. Host Hotel Comfort Suites. 100 Opal Court, Albany, OR 97322

[www.comfortsuites.com](http://www.comfortsuites.com) \$99 per night plus taxes. Four dogs in room limit. Pet fee \$30 maximum for entire stay. Phone numbers 541-928-2053 or 866-625-4884. Hot Breakfast. Request Flat-coated Retriever Specialty for group rate. The block will be held until April 1. After April 1 changes to the reservation can be made without any charge. After April 1, if reservations are cancelled, 1 night room and tax will be charged.

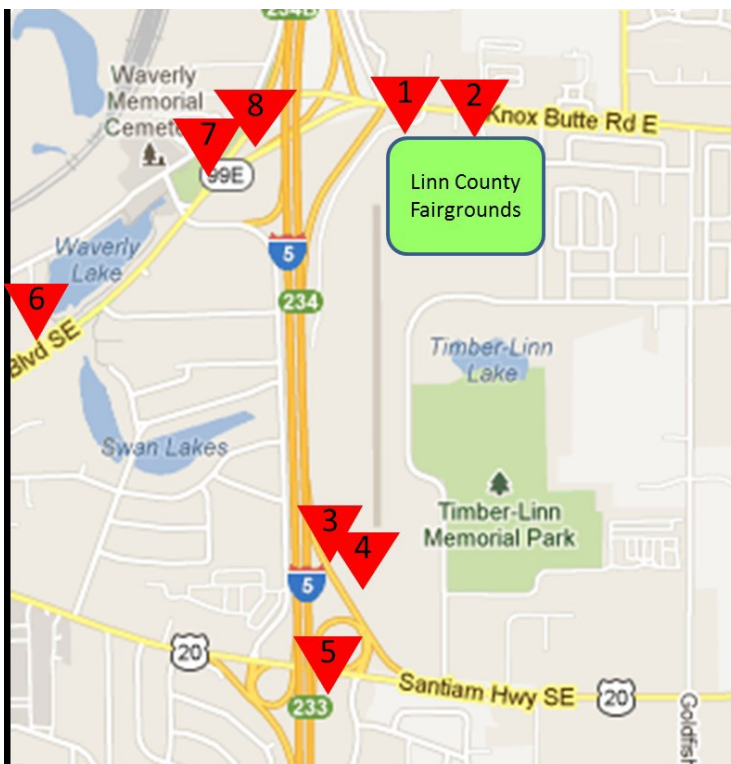
2. Host Hotel Holiday Inn Express. 105 Opal Court, Albany, OR 97322 [www.hiexpress.com](http://www.hiexpress.com) \$109 per night plus taxes. Four dogs in room limit. Pet fee \$30 maximum for entire stay. Phone numbers 541-928-8820 or 877-634-0686. Hot Breakfast. Request Flat-coated Retriever Specialty for group rate. The block will be held until April 1. After April 1 changes to the reservation can be made without any charge. After April 1, if reservations are cancelled, 1 night room and tax will be charged.

Shuttle service from Portland airport to Holiday Inn Express and Comfort Suites: [city2cityshuttle.com](http://city2cityshuttle.com). Reservations required. Call 541-758-8001

3. Host Hotel Best Western Plus Prairie Inn 1100 Price Rd SE, Albany OR 97322.

[www.albanybestwestern.com](http://www.albanybestwestern.com) 541-928-5050 or 877-545-4167. \$95.49 per night plus taxes. Four dogs in a room limit. Pet fee \$30 maximum for entire stay. Free hot breakfast buffet. Request Flat-coated Retriever Dog Show for special rate. Rate not available online. The block will be held until April 1, 2014. Twenty-four hour advance notice to cancel room to avoid penalty. 4. Econo Lodge 1212 Price Rd SE, Albany OR 97322 [www.econolodgealbanyor.com](http://www.econolodgealbanyor.com) 541-926-0170 \$25 pet fee maximum or \$5 per day. Lots of area to walk dogs.

4. Econo Lodge 1212 Price Rd SE, Albany OR 97322 [www.econolodgealbanyor.com](http://www.econolodgealbanyor.com) 541-926-0170 \$25 pet fee maximum or \$5 per day. Lots of area to walk dogs.





## *Specialty Update, continued*

5. Phoenix Inn Suites 3410 Spicer Dr, Albany OR 97322 [www.phoenixinn.com](http://www.phoenixinn.com) 541-926-5696 or 888-889-0208 No pet limit and a one time pet fee of \$15. Hot break-fast.
6. Motel 6 2735 Pacific Blvd SE, Albany, OR 97321 [www.motel6.com](http://www.motel6.com) 541-926-4233 or 800-466-8356
7. LaQuinta Inn 251 Airport RD SE, Albany OR 97322 [www.lq.com](http://www.lq.com) 541-928-0921 or 800-531-5900 No pet limit and no pet fee. Hot breakfast.
8. Super 8 315 Airport RD SE, Albany, OR 97322 [www.super8.com](http://www.super8.com) 541-928-6322 or 800-800-8000 No pet limit and a one time pet fee of \$10 per dog. Hot breakfast.

### Schedule for 2014 Oregon Specialty

Saturday, May 31 Hunt Tests at Scio 14 miles from show site

Master Judges: Bryant Meyer and Glen Marttila

4-6 month puppy sweeps class

Gun Dog sweeps Bitches Judge Sid Marx

8:30 am Obedience (two rings) Judges Theresa Temple and Chris Cornell

2-5 pm Education Seminar-Pat Hastings Flat-coat structure

6 pm social 6:30 NW Dinner

Sunday, June 1 WC/WCX test at Scio 14 mile from show site

WC Judges: Cindy Meyer and Mary Jo Marttila

6 pm Field Banquet

Wednesday, June 4

4-6 month puppy class Judge Kurt Anderson

8:30 am Dog classes Judge Kurt Anderson

Gun Dog sweeps Dogs Judge Sid Marx

Junior Handling judge Noreen Cartwright

11 am CERF/OFA Eye Clinic Dr. Sarah Maxwell

6 pm Pizza Party for juniors

FCRSA Board meeting after classes conclude

Dinner on own

7:30 pm Wine, Beer and Cheese Tasting & Silent Auction

Monday, June 2

8 am (FCR only) agility in indoor horse arena Judge Paula Ratoza

11 am Rally (one ring) Judge Teresa Temple

4 pm Ring of Honor

Start 4 pm Welcome Party

5 pm Veteran Sweeps in the evening Judge Shelly Spencer-Marx

(People can enter the conformation building in the morning and set up for grooming)

Thursday, June 5

8:30 am Bitch classes Judge Kurt Anderson

2-5 pm Judges Education in afternoon

6 pm social, 6:30pm Dinner and Annual meeting

Tuesday, June 3

8:30 am Puppy sweeps Judge Shelly Spencer-Marx

(Continued on next page)

## *Specialty, continued*

Friday June 6

9 am Best of Breed Judge Kurt Anderson

Stud dog/ brood bitch and Brace Judge Kurt Anderson

6 pm social, 6:30 Awards banquet

### Specialty Chairs

Co-Chairs Heather Dawson and Joyce Brackney

Superintendent-Jack Onofrio

Treasurer- Mary Aykens

Conformation Chair -Donna Keeter and Joyce Brackney

Obedience Chair -Jeanne Allen

Agility Chair- Lynda Spangler and Vicki Peterson

Field Chair -Pat Boydston and Ed Ferner

Field Chair Secretary and working with Entry Express-Candy Ferner

Tracking Chair-Kris Rainey

Ring of Honor-Keli Martin (Cindy Tulpa will assist)

Merchandise- Stacy Ronan

Hospitality- Jo Chinn and Lura Dunn

Catalog Ads- Candy Ferner

Judges Education- Dinah Baggenstos

Junior Showmanship- Dinah Baggenstos

Ribbons-Sandee Butler and Kathy Adams

Hospitality Bags and Name Tags- Linda Monroe and Stacy Ronan

Web Site-Barbara Fowler, Gary Simpson and Chris Butler

RV Reservations-Ray Konopa

Vendors-Stacy Ronan

Silent Auction to benefit the FCRSA Foundation-Jennifer Stanley

Trophy Donations-Nanci Hanover

Trophy Chair- Jeanne Allen and Linda Monroe

Logo Chair-Joyce Brackney and Heather Dawson

Volunteer Coordinator – Pam Morris

Reporter/Recorder – Mary Aykens

Videographer – Dog Show Video Pros

Saturday, June 7 Tentative-this date may change

Tracking TD, TDX

Show Photographer – Randy Roberts

Candid Photographer – Chris Butler

Grounds- Steve Chinn

On Site Vet-Dr. Sophia Fanous

Eye Clinic-Pete and Kate Szilard

Three Q Award (field, agility, rally, conformation, obedience and tracking) ("I Made the Cut" ribbons will count as a ribbon for this event)-Margo Ormiston

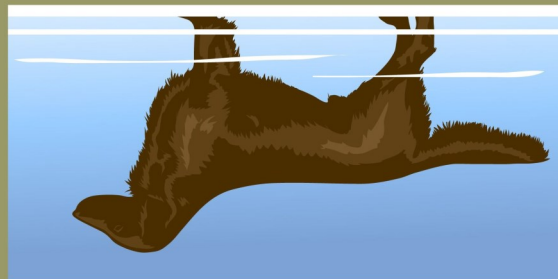
Catalog Sales-Harvey Riggs

Social Media-Kathy Adams

### Position left to fill:

Live Auction-Do we even need this?

## FLAT-COATED RETRIEVER SOCIETY *of* AMERICA



National Specialty  
ALBANY, OREGON 2014

## ***Donations Needed for Agility Raffle***

Dear Friends of Flat-Coated Retrievers

We're seeking RAFFLE donations for the upcoming Flat-Coated Retriever Society of America's All Breed Agility Trial to be held in Central Point, Oregon, July 25-28, 2013. This is an Annual All-Breed Agility Trial put on by the Northwest Flat-Coated Retriever Club under the FCRSA banner - For those of you wishing to join us the entries close July 10th – contact Lynda Tjarks Agility.

Proceeds from the raffle will go to support activities of the upcoming 2014 FCRSA National Specialty in Albany, Oregon!

We are now collecting donations for this year's raffle. Items do not have to be new - Donations might include:

- Ø General dog-related items (treats, food, toys, leashes, collars, clickers, coats, etc.)
  - Ø Dog competition/training items (agility tug toys, agility equipment, bumpers for hunt training, obedience articles, travel crates, etc.)
  - Ø Non-dog related items are always popular (books, CDs, clothing, household items, garden items, electronics, non-perishable food, etc.)
  - Ø Those wonderful hand-made-by-you items are always popular!
- If you don't have time to clean those closets or shop for items –
- Ø You can order from your favorite retailer to be sent directly to Pat Boydston.
  - Ø Ask your fellow dog club members & training classmates (this can result in a delightful variety of useful items!)
  - Ø Monetary donations are always welcomed – in any amount. Small donations can be pooled and are always appreciated. We will use cash donations to purchase items.

We will make every effort to credit all donations. Remember, too, that all donations are tax deductible because of the club's non-profit status.

Items can be brought to the trial OR sent to any of the following –

Pat Boydston  
 2804 Cordelia Way  
 Medford, OR 97501  
 Email: mickeymo2@earthlink.net

Mary Aykens  
 1196 SW Harper Road  
 Port Orchard, WA 98367  
 Cell: (253) 229-150  
 Email: maryd333@AOL.com

Thank you all!



## *Spotlight on Obedience, continued*

contact some of our members to steer you in the right direction. You and you dog can have a lot of fun doing obedience and rally. This breed works really, really well for positive reinforcement training (IE treats, toys etc). You have a year to train, think about getting out there and showing us the fun and intelligence this breed has.”

Jeanne encourages members to try the “Brace” and Team” classes. For the Brace class, two dogs work together with one handler. The handler may use two leads or join the dogs with a coupler. The exercises are the same as the Novice class. Jeanne says, “This can be very funny if you have one dog that does a fast recall (come) and one that is slow. Of course that is what we love about this breed is their sense of humor, you need to keep this in mind when you brave enough to venture into this venue. Those of us that have had this breed for years will be laughing with you and not at you. Chances are we been there ourselves. I have been many more time than I want to count but still love every minute of it.”

“Team” is another class that many have never seen. The exercise are the same as the Novice class, with the exception of the recall. On this exercise the dogs will be left on a sit and all of the handlers will go to the other side of the ring. One at a time each handler will call his/her own dog and then on the judges signal he/she will tell or give a hand signal to drop the dog. Then the next dog does the same thing, until all the dogs have been called. They must stay on their down. When the last dog has been called the judges (two for this class) will then signal the handlers to call all the dogs to them. Jeanne Allen says, “This is where it can be VERY interesting. If the dogs are well trained they should come and sit in front of the handlers. Of course with this breed one just never knows what will get into their heads. Let's just say that lots of laughter is usually the norm with this class.. . Also, the figure eight is done with 5 people as posts. Each team will have their own set , the tricky part is keeping the flow of the team going so one is not to far ahead and one to far behind, This and the recall are the exercises that need to have the teams practice together. I think a team from the north, the middle and the south of the NW members could be a lot of fun. Think about getting out there and start working our special breed.”

Interested? You can get a complete set of rules and regulations for obedience and rally at the AKC website: [www.americkennelclub.org](http://www.americkennelclub.org). Try watch obedience and rally at a show near you!



Jeanne Allen's CH Whazthat's Across the Stars, CD RE "Jedi" demonstrates a retrieve on the flat for the Open Obedience Class.

## *Spotlight on Obedience, continued*

### FCRSA 2014 Specialty Obedience Judges

#### Chris Cornell Bio

Teaching basic manners to my son's gift from his grandparents, a rambunctious English Setter puppy, introduced our family to the world of obedience in 1976. After attending a couple of beginner classes and getting Queen under some kind of control, I got more interested, training intensified, and a new hobby was born. Queen went on to be a lot of fun to work with and, in 1980, became the first English Setter to earn the Obedience Trial Championship (OTCH) title.

Over the years, we have trained English & Irish Setters, Flat-Coated Retrievers and Labrador Retrievers. Currently, we have a Yellow Lab (Mercedes), English Springer Spaniel (Junior), mixed breed (Jamie), Pomeranian (Fox) and Flat-Coated Retriever (Bree). Junior, Jamie and Fox started as foster dogs, until they decided that we passed muster and decided to stay permanently. We have raised two Lab puppies for Guide Dogs for the Blind. Mercedes, the first, came back to live with us and Benicia, who is now retired from the organization's breeding program. In 2000, my wife Claire and I organized a therapy dog club in our community and we visit a number of retirement homes, assisted living and Alzheimer facilities, hospital and have a reading program with children at two local libraries and four elementary schools. Mercedes, Junior, Fox and Bree are therapy dogs. I am a member of the Hurricane Ridge Kennel Club and also serve as the Obedience/Rally Chairman.

I started judging obedience at AKC shows in 1984. Claire and I lived in Phoenix, AZ, for many years until I retired in 1999 (civil engineer for the City of Phoenix). We then moved to our new home in small town Sequim, WA, which is on the Olympic Peninsula, about 50 miles northwest of Seattle. We love it up here, have an irrigation pond with ducks, geese, coots, herons, hawks and eagles, and a fantastic view of the majestic Olympic Mountain Range. We are now confirmed Northwesterners.

Thanks for the invitation to judge at the National Specialty.

#### Theresa Temple Bio

I started Obedience training in the 1970's when my family bought our first pure bred dog, a Labrador Retriever, named Ralph. I was still in school and being allowed to go to training classes was the highlight of my week!

A year later I was allowed to get a dog of my own, also a Labrador, I named him Bumper. The breeder encouraged us to show him, and I went on to finish Bumper's bench championship, a companion dog title and we earned his LRC working certificate.

Since then I have titled numerous Labradors, Bloodhounds, Wirehaired Dachshunds and a Parson Russell Terrier in Obedience, Rally, Agility and Conformation events.

I currently own two Labradors and a Parson Russell Terrier.

Thank you for inviting me to judge your event.





Carolyn and Joe Bersch and their Flatcoats Suzy, and Scout  
**Invite You to the**  
**Eighth Annual Flat Coated Retriever Daze**  
**at**  
**RUDDER'S RIVER RANCH**

52368/52372 Concrete Sauk Valley Road  
 Concrete, WA 98237

Saturday, August 3, 2013

10:00 – 3:00



Potluck Lunch to be Served at 1:00 (or thereabouts)

Pot Luck, but some BBQ'd chicken/homemade Brats will be provided

Please Bring Your Own Beverages

**Please Feel Free to Invite other Flatties (and their owners too!)... or folks who might like to own a Flattie!**

Please RSVP and request directions by e-mailing

[cjbersch@comcast.net](mailto:cjbersch@comcast.net)

or

[rharp@movinglink.com](mailto:rharp@movinglink.com)

**OVERNIGHT PARKING/CAMPING IS AVAILABLE ALL WEEKEND**

**NOTE: You may want to bring a camp chair**

1. If you get lost, call Joe's cell - 206.618.4847 or Carolyn's - 206.841.0062. Both phones work on the property 2. Please rsvp to [cjbersch@comcast.net](mailto:cjbersch@comcast.net) Joe is trying to see how many may be camping/staying on the property overnight as he is considering bringing in a honeybucket.
3. Bring a chair to sit in.
4. You are welcome to camp out (Motorhome, camper, tent,...) on the property Friday to Sunday - So far, there is one party who will be camping on-site.

Joe & Carolyn's "Scout" from Heather Dawson- Northern Lights FCR will be this year's host. Karen & I will have our "Tigger" from Stacey Ronan Valley Crest Kennel be the social director!

Looking forward to see you all on August 3rd!



## Directions to Rudder's River Ranch:

### From the South:

Take I-5 North to the Arlington/Darrington Exit (Hwy 530). Follow Hwy 530 through Arlington to Darrington (Approximately 30 miles). At the stop sign in Darrington make a left, following Hwy 530 toward Rockport. Just before Milepost 62, turn left onto Concrete-Sauk Valley Road. You will quickly cross the Sauk River and veer right. Follow the Concrete-Sauk Valley road about 6 miles. At approximately MP 12.1 there are two blue address markers on the left hand side (52368, 52372). Turn left and proceed 1 mile up the gravel road to the houses.

### From the North:

Take I-5 south to the Cook Road exit just north of Mt. Vernon. Follow Cook Road into Sedro Woolley and turn left on Hwy. 20. Follow Hwy 20 about 25 miles to Concrete. Just before Concrete you will go through the town of Grassmere where there is an Albert's Red Apple in a strip mall on the right. Continue about another 1/2 mile and turn right onto Concrete-Sauk Valley Road. (You will turn before actually reaching Concrete proper). There is a Valley's West Realty building at the turn. Proceed on Concrete-Sauk Valley until milepost 12.1 where there are two blue address markers on the right (52368, 52372). Turn right and proceed 1 mile up the gravel road to the houses.



Flat-Coat Times  
Jo Chinn, Editor  
331 Livengood Lane  
Sequim, WA 98382

Advertising Rate: \$10/

Website:  
[www.nwferc.org](http://www.nwferc.org)

We are a 501(c)7 entity. Federal tax ID:  
36-3109628.

### Officers

President Jeanne Allen  
503.925.1838  
[whazthatfcr@earthlink.net](mailto:whazthatfcr@earthlink.net)

Vice President Heather Dawson  
360.904.7299 (cell)  
[heather@northernlightsfcr.com](mailto:heather@northernlightsfcr.com)

Secretary Sheila Bradshaw  
360.577.0890  
[shelenfcr@aol.com](mailto:shelenfcr@aol.com)

Treasurer Mary Aykens  
360.895.6055 (home)  
253.229.1505 (cell)  
[maryd333@aol.com](mailto:maryd333@aol.com)

Membership Secretary Linda Monroe  
509.845.0550  
[tamturifcr@clearwire.net](mailto:tamturifcr@clearwire.net)

Newsletter Editor  
Jo Chinn  
360.461.3890  
[jchinn@olypen.com](mailto:jchinn@olypen.com)

### Board of Directors

Kris Rainey  
541.743.3355  
[kris.rainey@ymail.com](mailto:kris.rainey@ymail.com)

Lura Dunn  
425.488.9916  
[turalura@comcast.net](mailto:turalura@comcast.net)

Pat Boydston  
541.772.4452 (home)  
541.890.6158 (cell)  
[mickeymo2@earthlink.net](mailto:mickeymo2@earthlink.net)